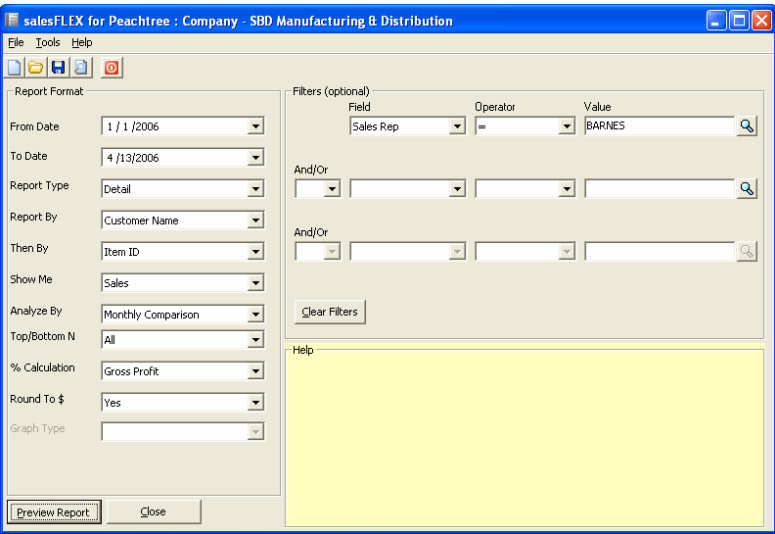


salesFLEX™ for Peachtree® by Sage
The enhanced sales reporting tool for Peachtree users

Analyze your sales data like never before, and make the informed decisions you need to run your business more effectively!



Produce thousands of powerful, dynamic sales reports with ease

- Generate reports by customer, item, city, state, area code, ship-to name, item type, sales rep, and more
- Analyse data by any period - day, week, month, quarter, year, year-to-date or more
- Display up to twelve date periods per report, for a comprehensive comparative analysis
- Examine data by sales dollar amount, shipped quantity, gross profit or cost amount
- Run Detail Reports using two criteria, such as customer and item, or sales rep and item
- Top/Bottom N capabilities (such as Top 10 customers)
- Numerous Report Combinations with Powerful Filters
- Save commonly used report options and criteria as report templates, making ongoing report generation a breeze!

For more information or to download your free trial, visit www.geminilogic.com/peachtree today!

<p>System Requirements Peachtree Complete or Premium Accounting Microsoft Windows 98 SE, Me, 2000 SP3, or XP SP2 operating system 20 MB of free disk space</p>	<p>Gemini Logic Inc. 2600 Skymark Avenue, Bldg. 10, Ste 101 Mississauga, Ontario L4W 5B2 Tel: 905-625-7212 Fax: 905-625-9644 E-mail: sales@geminilogic.com Internet: www.geminilogic.com</p>
--	--